

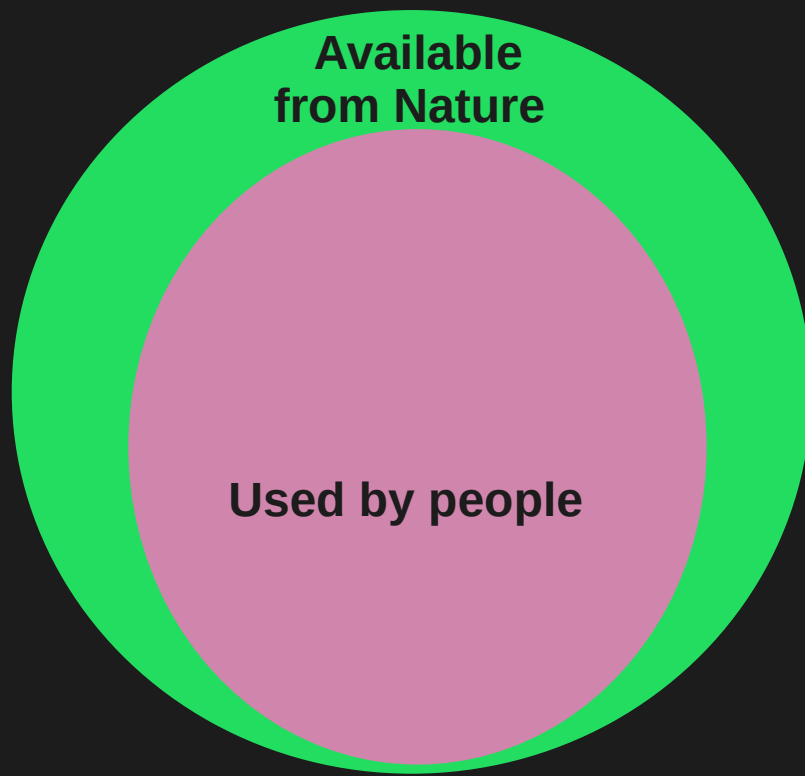
Northern  
School  
Perma  
culture

# Permaculture Ethics

Angus Soutar April 2023



**Care for the planet and all the life systems on it**



**Resources used by people**

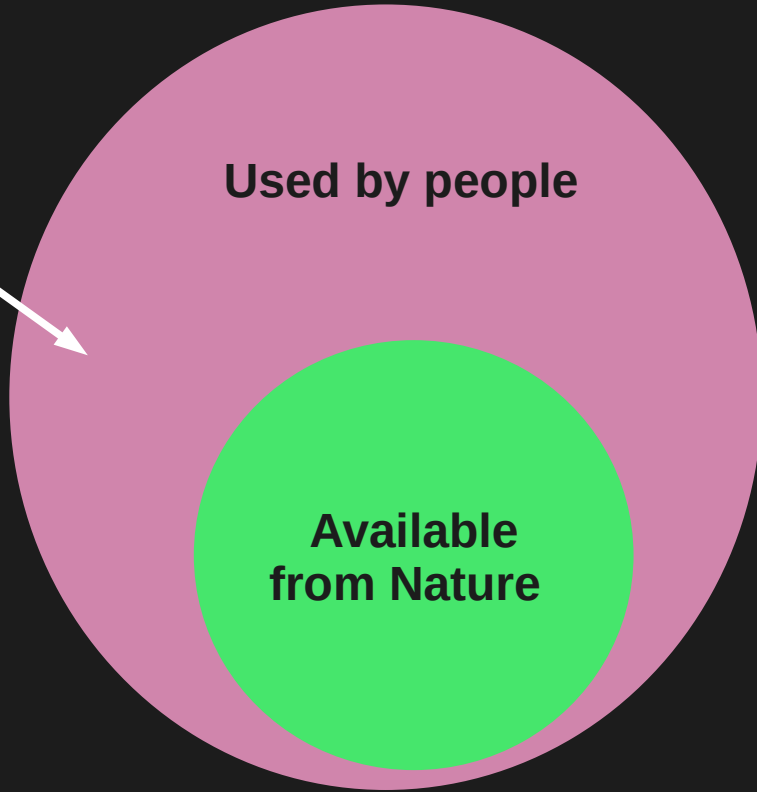
# Endangered Metals



Dates they will become scarce

Vanishing metals

**Mainly fossil fuels**



**Used by people**

**Available  
from Nature**

**Energy used by people**

Meet people's needs = Care for people

Outdoor  
9810333372

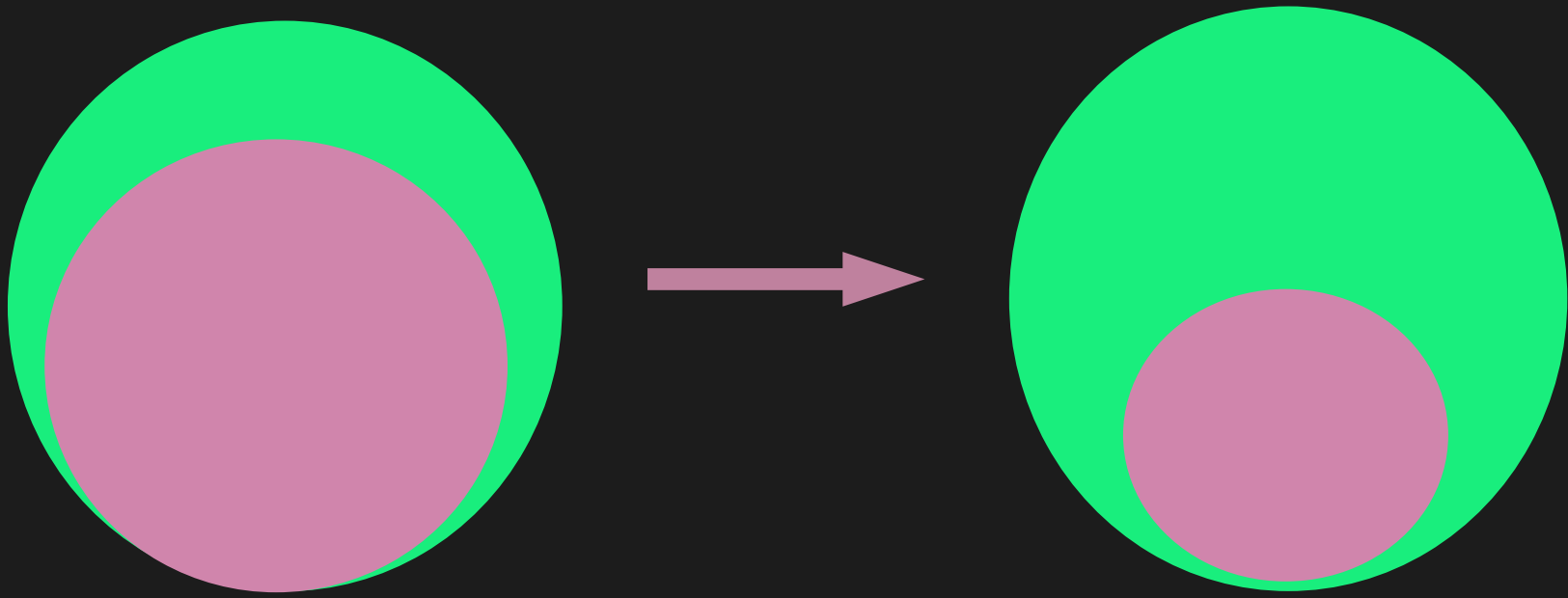
← 100m  
Hauz Khas  
← 1.5 km  
← 2.5 km  
Airport



**Nature is already in good order!**



# Reduce our “drawdown” of earth’s resources



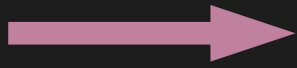
Look to the future = Care for the future



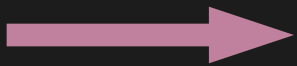
**“Factor Four”** (1997)

doubling energy efficiency

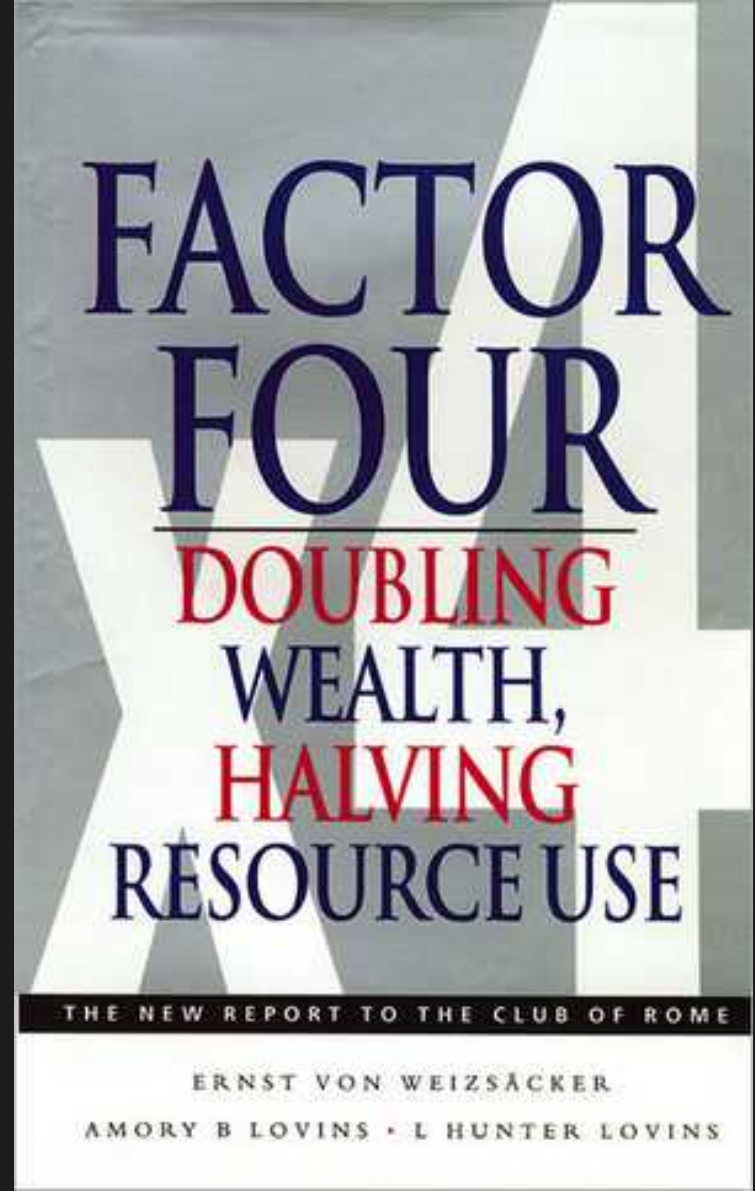
halving resource use



increasing wealth



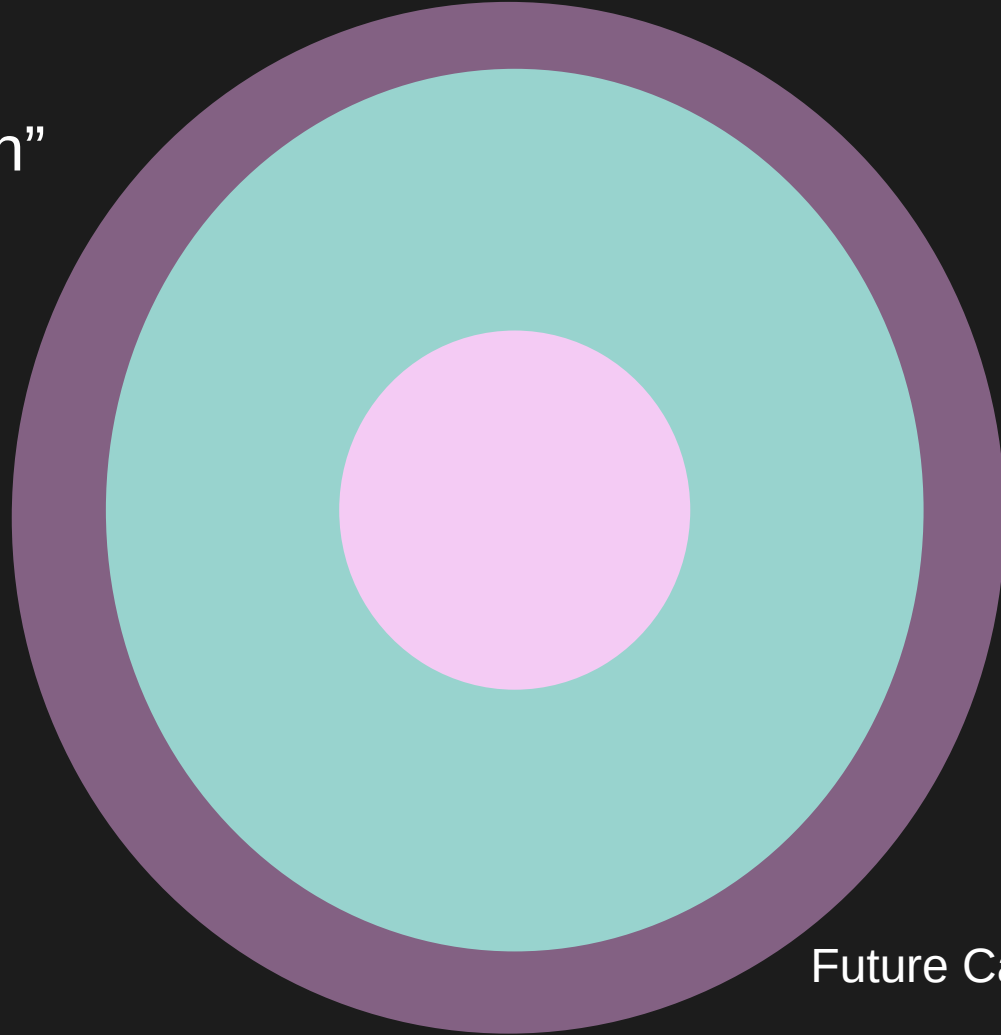
decreasing risks of climate change



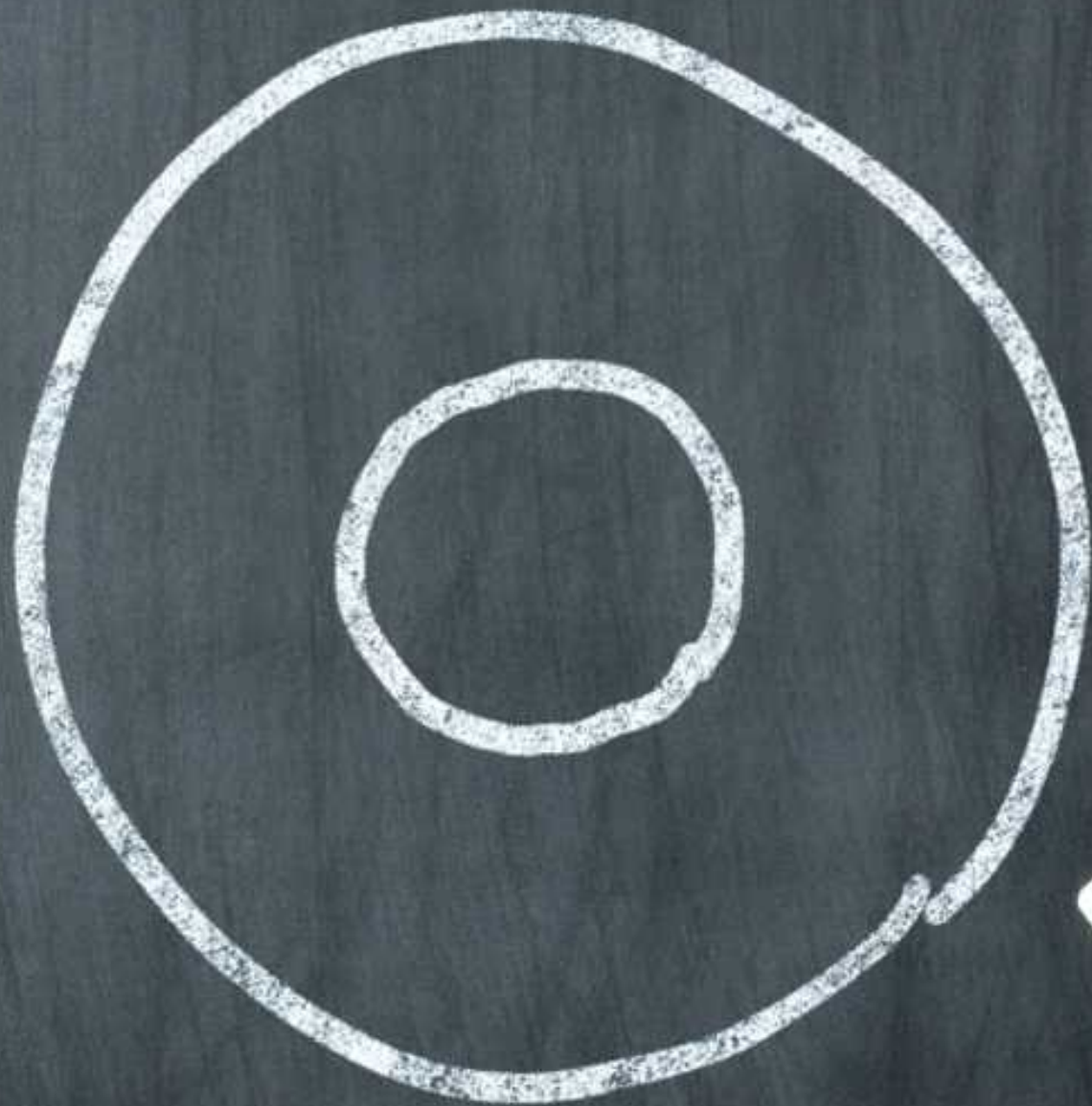
# “Limits to Growth”

Club of Rome (1972)

Donella Meadows et al



Future Care = “Living within Limits”



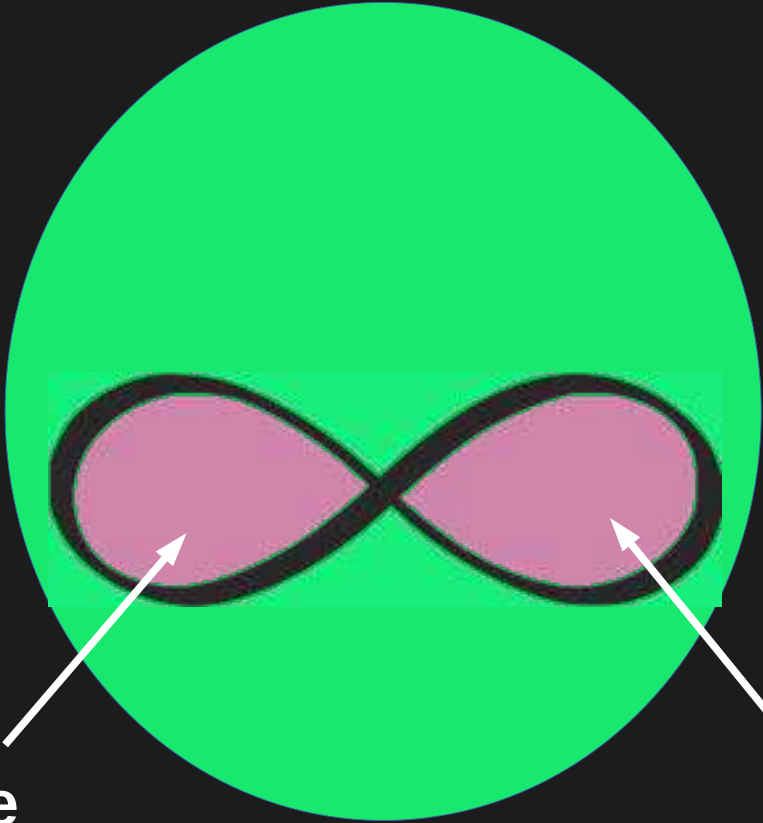
# The “doughnut economy”

Kate Raworth



“Work within the doughnut”

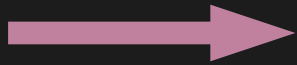
**Permaculture Ethics**  
Resource and energy use



**Care for people**

**Care for the future**

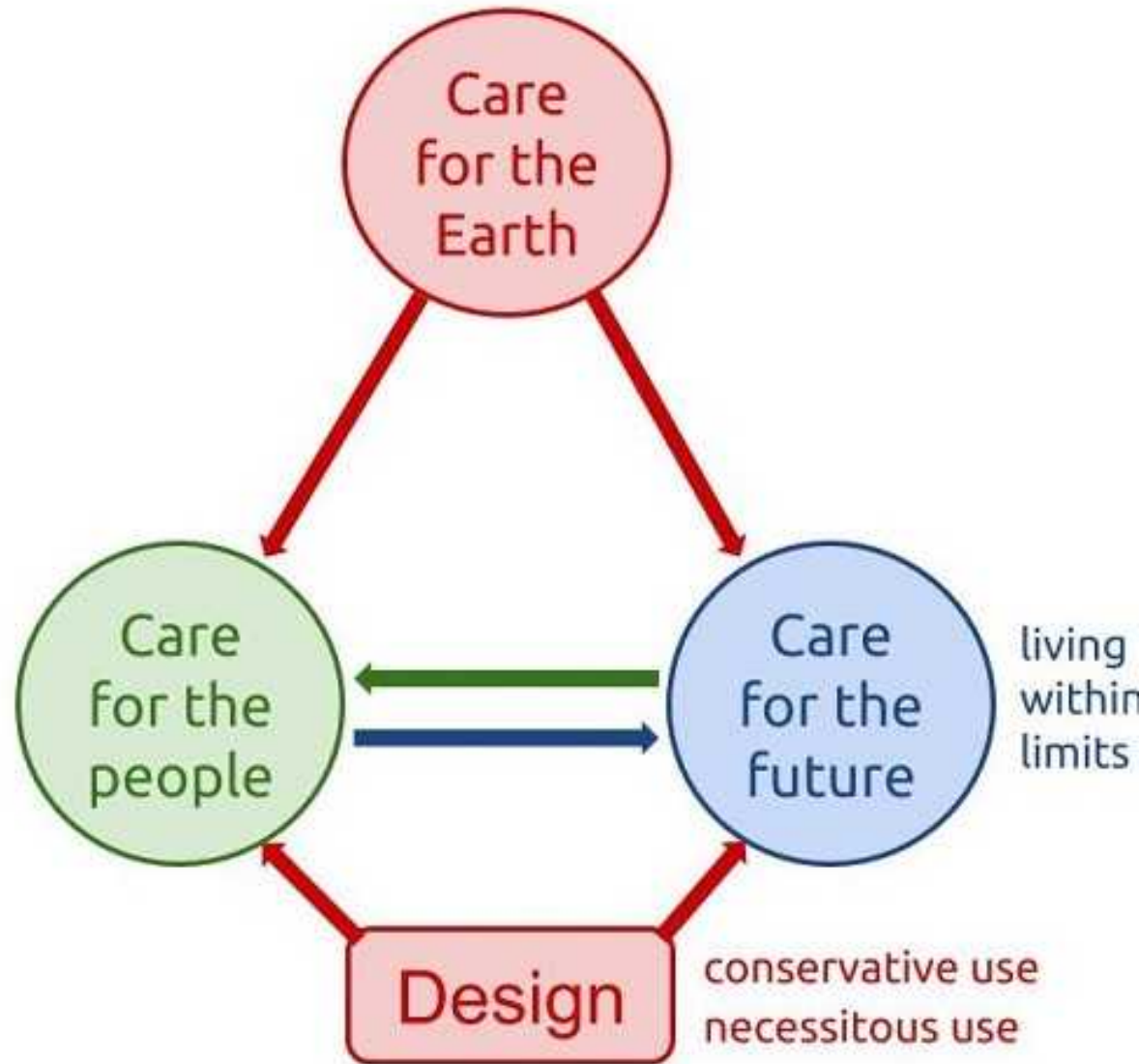
# Permaculture Ethic: earth care



Ethical directives:

- Look after people
- Look out to the future

Future Care: "Setting limits to population and consumption"



# The permaculture way:

Design

Design

Design

**Think about using resources!**

The principle of **necessitous use**

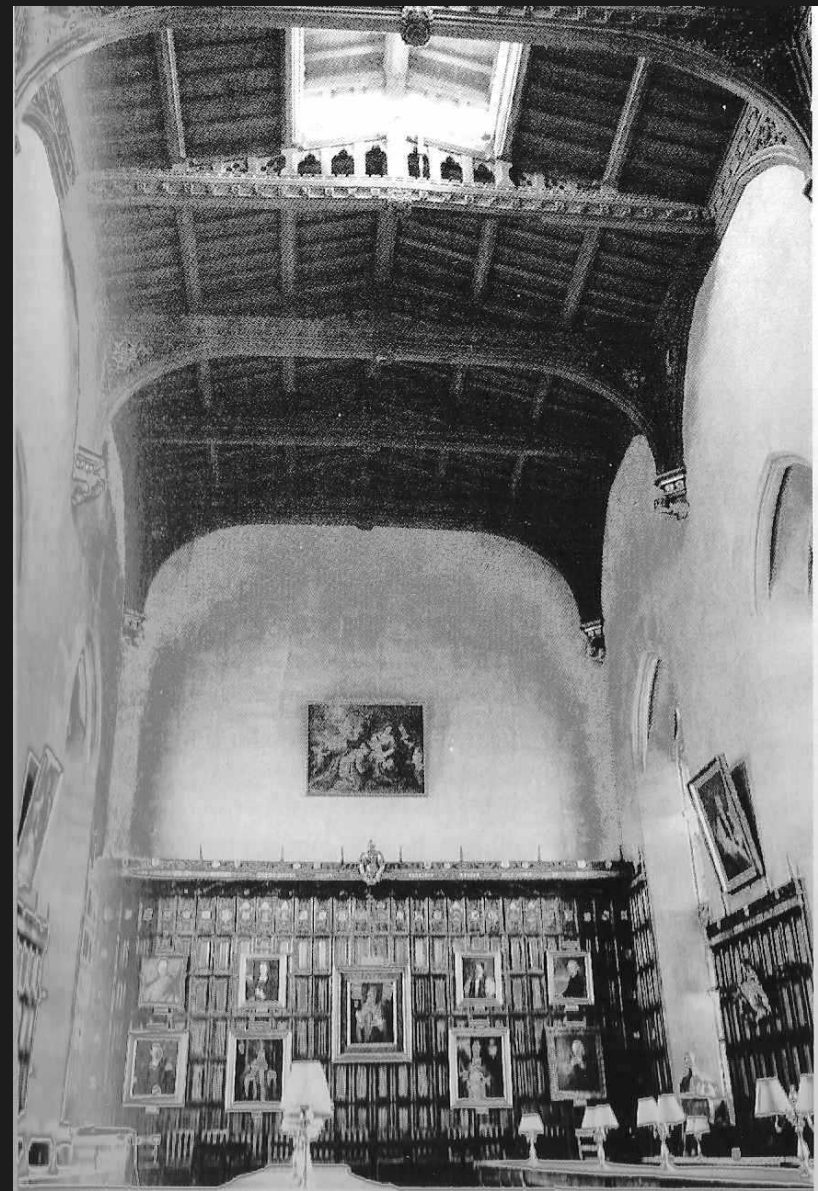
The principle of **conservative use**

# Oxford: New College Hall

"The principle of conservative use"  
(See "How Buildings Learn")



Renovation 1862 – 1865 by  
George Gilbert Scott





"A classic and probably a work of genius" —JANE JACOBS, author of *The Death and Life of Great American Cities*

**"festina lente"**

**- small steps at a slow pace**

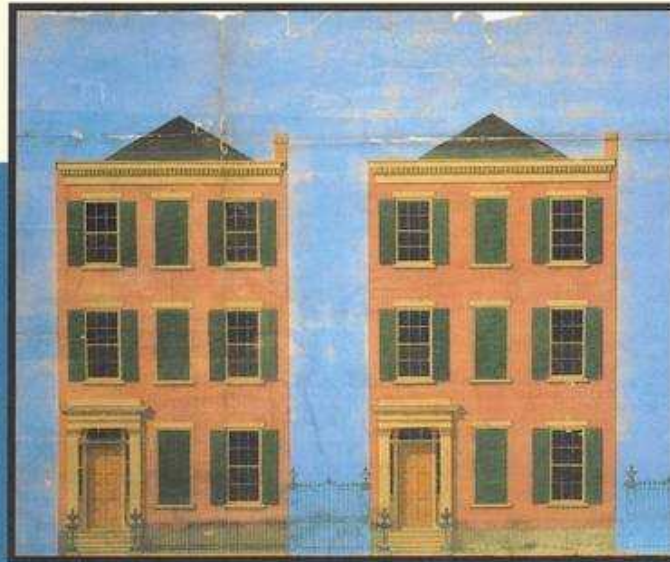
"There is a certain high calling in the steady tending to a ship, to a garden, to a building.

One is participating physically in a deep, long life."

Stewart Brand

# HOW BUILDINGS LEARN

What happens after they're built



New Orleans, 1857



The same two buildings, 1993



STEWART BRAND

creator of *THE WHOLE EARTH CATALOG*





**The Ancient of Days**  
**William Blake**



Gaea



Cyamites



Vandana Shiva



Rod Everett



Francesco Paolo Michetti

The only ethical  
decision is to  
take  
responsibility  
for our own  
existence and  
that of our  
children.

Make it now.

# Credits

Images:

Angus Soutar

Edward Esko and Alex Jack

Teresa Pereira

Whitworth Gallery, Manchester

Fine Art America

The logo for Northern School Permaculture is a teal square containing the text "Northern School Permaculture" in a white, sans-serif font, stacked in four lines.

Northern  
School  
Perma  
culture